

STEP STONE PAVERS



Concrete Pavers • Stone Pavers • Tiles • Garden Walls & Edging
Retaining Walls • Concrete Sleepers • Concrete Blocks • Wall Cladding

STEP STONE PAVERS



FEATURES

- Slip resistant
- Hardwearing and durable
- Economical
- Free samples available

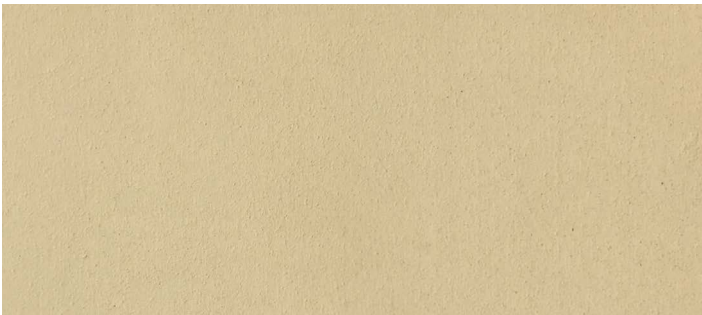
SUITABLE FOR

- Garden pathways
- Lawn pathways
- Stepping stones
- Fill the cavity between the step stones with mulch, pebbles or stone

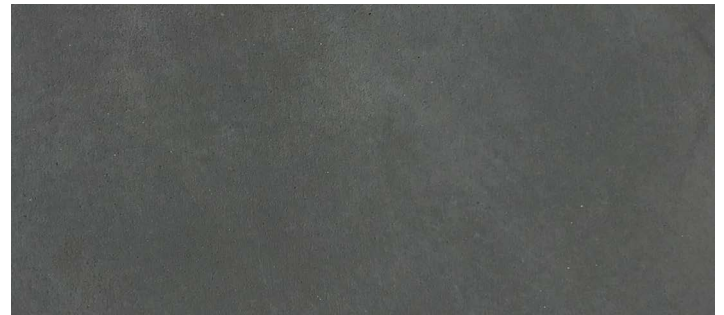
Specifications	Size	Units Per Pallet	Weight per unit
Small Round	450 x 450 x 40mm	72	15.5kg
Large Round	580 x 520 x 40mm	60	21.6kg
Large Rectangular	680 x 440 x 40mm	60	21.6kg

COLOUR RANGE*

Sandstone



Charcoal



*Colours are an indication only. Always sight physical product colour samples before purchase.