

BUDGETPAVE®



Concrete Pavers • Stone Pavers • Tiles • Garden Walls & Edging
Retaining Walls • Concrete Sleepers • Concrete Blocks • Wall Cladding



BEST PRICE >>>
promise Terms and conditions apply

FEATURES

- Budget pavers
- Light and easy to install
- Variety of colour options
- Free samples available

SUITABLE FOR

- Patios and alfresco
- Courtyards
- Entertaining areas
- Pathways
- Walkways
- Tool sheds



Specifications	Size	No. per m ²	Weight per m ²	m ² per pallet
Budgetpave®	190 x 190 x 30mm	27.5	67.5kg	26.18 - 27.70

COLOUR RANGE*

Oatmeal



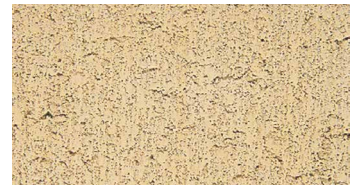
Sunstone



Terracotta



Paperbark



Sunset Glow



Biscuit Blend



Port Blend



Charcoal



*Colours are an indication only. Always sight physical product colour samples before purchase.