

POOL STONE PAVERS



Concrete Pavers • Stone Pavers • Tiles • Garden Walls & Edging
Retaining Walls • Concrete Sleepers • Concrete Blocks • Wall Cladding

POOL STONE PAVERS



BEST PRICE 
 promise *Terms and conditions apply.

FEATURES

- Textured finish
- Slip resistant
- Cool underfoot*
- Hardwearing and durable
- Made from WA Limestone

SUITABLE FOR

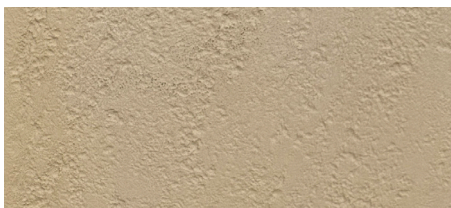
- Pools and pool surrounds
- Entertaining areas
- Courtyards and patios
- Garden paths
- Stepping stones



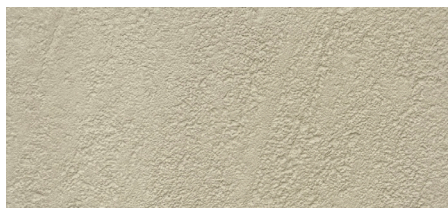
Specifications	Size	No. per m ²	Weight per m ²	m ² per pallet
Pavers	600 x 400 x 40mm	4.17	80kg	17.28
Bullnose	400 x 400 x 40mm	N/A	12.8kg each	28.8 LM
Aris Edge	400 x 400 x 40mm	N/A	12.8kg each	54 LM
Aris Edge	600 x 400 x 40mm	N/A	19.2kg each	32.3 LM

COLOUR RANGE*

Wheat*



Pearl*



Charcoal



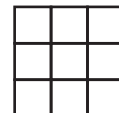
*Due to natural resources used in production there are slight colour variations between batches. Pool copings can differ in appearance to the body tile and mixing 2 different sizes can end up with slight variations. Colour swatches are a guide only. Samples you receive may also be slightly different to what is received. Pavers should be laid with approximately 2-3mm gap due to thickness variation. Must be laid on soft sand base. This product has a V2 Variance rating. Colours Wheat and Pearl cool underfoot.



www.australianpaving.com.au

  **australianpavingcentre**

UNIFORM APPEARANCE



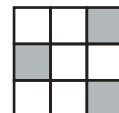
V1

SLIGHT APPEARANCE



V2

MODERATE APPEARANCE



V3

SUBSTANTIAL APPEARANCE



V4